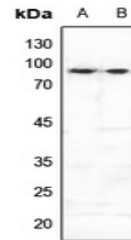


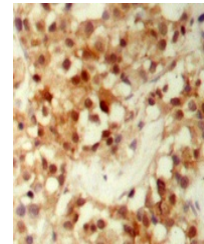
Product Datasheet

FOXO3 (Phospho-S253) antibody (orb315784)

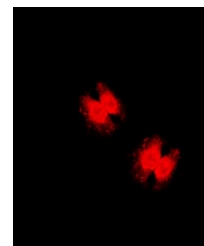
Description	Rabbit polyclonal antibody to FOXO3 (Phospho-S253)
Species/Host	Rabbit
Reactivity	Human, Mouse, Rat
Conjugation	Unconjugated
Tested Applications	IF, IH, WB
Immunogen	KLH-conjugated synthetic phosphopeptide corresponding to residues surrounding S253 of human FOXO3 protein. The exact sequence is proprietary.
Target	FOXO3
Preservatives	Liquid in 0.42% Potassium phosphate, 0.87% Sodium chloride, pH 7.3, 30% glycerol, and 0.01% sodium azide.
Form/Appearance	Liquid in 0.42% Potassium phosphate, 0.87% Sodium chloride, pH 7.3, 30% glycerol, and 0.01% sodium azide.
Storage	Maintain refrigerated at 2-8°C for up to 2 weeks. For long term storage store at -20°C in small aliquots to prevent freeze-thaw cycles.
Note	For research use only
Clonality	Polyclonal
Source	Rabbit
Uniprot ID	Q9WVH4 , O43524
Entrez	56484 , 2309
Dilution Range	WB: 1-500:1000, IHC-P: 1-100:200, IF/ICC: 1-100:500, IP: 1-10:100
Expiration Date	12 months from date of receipt.



Western blot analysis of FOXO3 (Phospho-...



Immunohistochemical analysis of FOXO3 (P...



Immunofluorescent analysis of FOXO3 (Pho...