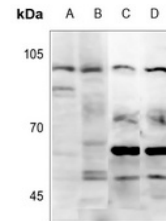


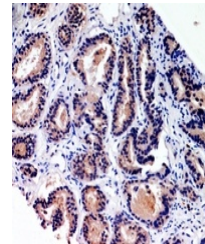
Product Datasheet

CD203c antibody (orb315776)

Description	Rabbit polyclonal antibody to CD203c
Species/Host	Rabbit
Reactivity	Human, Mouse, Rat
Conjugation	Unconjugated
Tested Applications	IH, WB
Immunogen	KLH-conjugated synthetic peptide encompassing a sequence within the center region of human CD203c. The exact sequence is proprietary.
Target	ENPP3
Preservatives	Liquid in 0.42% Potassium phosphate, 0.87% Sodium chloride, pH 7.3, 30% glycerol, and 0.01% sodium azide.
Form/Appearance	Liquid in 0.42% Potassium phosphate, 0.87% Sodium chloride, pH 7.3, 30% glycerol, and 0.01% sodium azide.
Storage	Maintain refrigerated at 2-8°C for up to 2 weeks. For long term storage store at -20°C in small aliquots to prevent freeze-thaw cycles.
Note	For research use only
Clonality	Polyclonal
Source	Rabbit
Uniprot ID	P97675 , O14638 , Q6DYE8
Entrez	5169 , 54410 , 209558
Dilution Range	WB: 1-500:1000
Expiration Date	12 months from date of receipt.



Western blot analysis of CD203c expressi...



Immunohistochemical analysis of CD203c S...