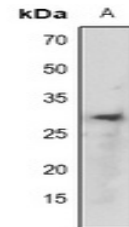


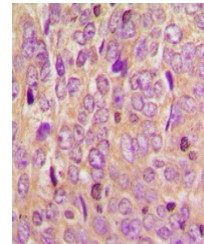
Product Datasheet

TCF6 antibody (orb315726)

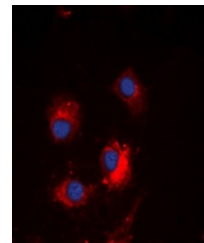
| | |
|----------------------------|---|
| Description | Rabbit polyclonal antibody to TCF6 |
| Species/Host | Rabbit |
| Reactivity | Human, Mouse, Rat |
| Conjugation | Unconjugated |
| Tested Applications | IF, IH, WB |
| Immunogen | KLH-conjugated synthetic peptide encompassing a sequence within the center region of human TCF6. The exact sequence is proprietary. |
| Target | TFAM |
| Preservatives | Liquid in 0.42% Potassium phosphate, 0.87% Sodium chloride, pH 7.3, 30% glycerol, and 0.01% sodium azide. |
| Form/Appearance | Liquid in 0.42% Potassium phosphate, 0.87% Sodium chloride, pH 7.3, 30% glycerol, and 0.01% sodium azide. |
| Storage | Maintain refrigerated at 2-8°C for up to 2 weeks. For long term storage store at -20°C in small aliquots to prevent freeze-thaw cycles. |
| Note | For research use only |
| Clonality | Polyclonal |
| Source | Rabbit |
| Uniprot ID | Q00059 |
| Entrez | 7019 |
| Dilution Range | WB: 1-500:1000, IHC-P: 1-100:200, IF/ICC: 1-100:500 |
| Expiration Date | 12 months from date of receipt. |



Western blot analysis of TCF6 expression...



Immunohistochemical analysis of TCF6 sta...



Immunofluorescent analysis of TCF6 stain...