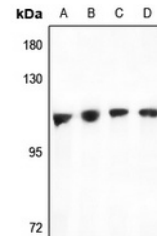


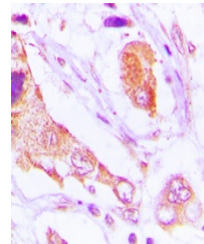
Product Datasheet

TAO1 antibody (orb315721)

Description	Rabbit polyclonal antibody to TAO1
Species/Host	Rabbit
Reactivity	Human, Mouse, Rat
Conjugation	Unconjugated
Tested Applications	IH, WB
Immunogen	KLH-conjugated synthetic peptide encompassing a sequence within the center region of human TAO1. The exact sequence is proprietary.
Target	TAOK1
Preservatives	Liquid in 0.42% Potassium phosphate, 0.87% Sodium chloride, pH 7.3, 30% glycerol, and 0.01% sodium azide.
Form/Appearance	Liquid in 0.42% Potassium phosphate, 0.87% Sodium chloride, pH 7.3, 30% glycerol, and 0.01% sodium azide.
Storage	Maintain refrigerated at 2-8°C for up to 2 weeks. For long term storage store at -20°C in small aliquots to prevent freeze-thaw cycles.
Note	For research use only
Clonality	Polyclonal
Source	Rabbit
Uniprot ID	O88664 , Q5F2E8 , Q7L7X3
Entrez	57551 , 286993 , 216965
Dilution Range	WB: 1-500:1000, IHC-P: 1-100:200
Expiration Date	12 months from date of receipt.



Western blot analysis of TAO1 expression...



Immunohistochemical analysis of TAO1 sta...