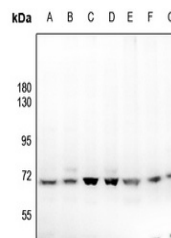


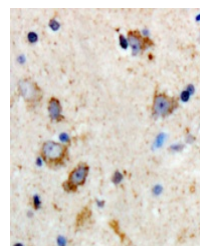
Product Datasheet

p67 antibody (orb315720)

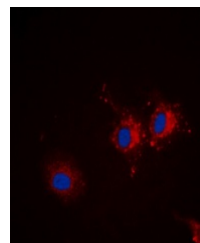
Description	Rabbit polyclonal antibody to p67
Species/Host	Rabbit
Reactivity	Human, Mouse, Rat
Conjugation	Unconjugated
Tested Applications	IF, IH, WB
Immunogen	KLH-conjugated synthetic peptide encompassing a sequence within the center region of human p67. The exact sequence is proprietary.
Target	STXBP1
Preservatives	Liquid in 0.42% Potassium phosphate, 0.87% Sodium chloride, pH 7.3, 30% glycerol, and 0.01% sodium azide.
Form/Appearance	Liquid in 0.42% Potassium phosphate, 0.87% Sodium chloride, pH 7.3, 30% glycerol, and 0.01% sodium azide.
Storage	Maintain refrigerated at 2-8°C for up to 2 weeks. For long term storage store at -20°C in small aliquots to prevent freeze-thaw cycles.
Note	For research use only
Clonality	Polyclonal
Source	Rabbit
Uniprot ID	P61765, P61764, O08599
Entrez	20910, 6812, 25558
Dilution Range	WB: 1-500:1000, IHC-P: 1-100:200, IF/ICC: 1-100:500
Expiration Date	12 months from date of receipt.



Western blot analysis of p67 expression ...



Immunohistochemical analysis of p67 stai...



Immunofluorescent analysis of p67 staini...