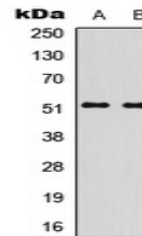


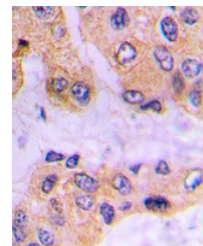
Product Datasheet

SMAD3 (Phospho-S213) antibody (orb315707)

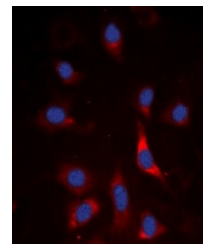
Description	Rabbit polyclonal antibody against Smad3
Species/Host	Rabbit
Reactivity	Human, Mouse, Porcine, Rat
Conjugation	Unconjugated
Tested Applications	IF, IH, WB
Immunogen	KLH-conjugated synthetic phosphopeptide corresponding to residues surrounding S213 of human SMAD3 protein. The exact sequence is proprietary.
Target	SMAD3
Preservatives	Liquid in 0.42% Potassium phosphate, 0.87% Sodium chloride, pH 7.3, 30% glycerol, and 0.01% sodium azide.
Form/Appearance	Liquid in 0.42% Potassium phosphate, 0.87% Sodium chloride, pH 7.3, 30% glycerol, and 0.01% sodium azide.
Storage	Maintain refrigerated at 2-8°C for up to 2 weeks. For long term storage store at -20°C in small aliquots to prevent freeze-thaw cycles.
Note	For research use only
Clonality	Polyclonal
Source	Rabbit
Uniprot ID	Q8BUN5 , P84022 , P84025
Entrez	4088 , 17127 , 25631
Dilution Range	WB: 1-500:1000, IHC-P: 1-100:200, IF/ICC: 1-100:500
Expiration Date	12 months from date of receipt.



Western blot analysis of SMAD3 (Phospho-
...)



Immunohistochemical analysis of SMAD3 (P...)



Immunofluorescent analysis of SMAD3 (Pho...)