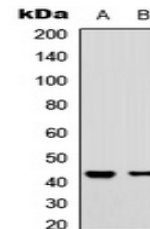


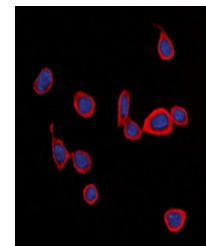
Product Datasheet

CD363 antibody (orb315699)

Description	Rabbit polyclonal antibody to CD363
Species/Host	Rabbit
Reactivity	Human, Mouse, Rat
Conjugation	Unconjugated
Tested Applications	IF, WB
Immunogen	KLH-conjugated synthetic peptide encompassing a sequence within the center region of human CD363. The exact sequence is proprietary.
Target	S1PR1
Preservatives	Liquid in 0.42% Potassium phosphate, 0.87% Sodium chloride, pH 7.3, 30% glycerol, and 0.01% sodium azide.
Form/Appearance	Liquid in 0.42% Potassium phosphate, 0.87% Sodium chloride, pH 7.3, 30% glycerol, and 0.01% sodium azide.
Storage	Maintain refrigerated at 2-8°C for up to 2 weeks. For long term storage store at -20°C in small aliquots to prevent freeze-thaw cycles.
Note	For research use only
Clonality	Polyclonal
Source	Rabbit
Uniprot ID	P48303, P21453, O08530
Entrez	1901, 13609, 29733
Dilution Range	WB: 1-500:1000, IF/ICC: 1-100:500
Expiration Date	12 months from date of receipt.



Western blot analysis of CD363 expression...



Immunofluorescent analysis of CD363 staining...