
Product Datasheet

**RSK1/2/3 (Phospho-T573/570/577) antibody
(orb315692)**

Description

Rabbit polyclonal antibody to RSK1/2/3

Species/Host

Rabbit

Reactivity

Human, Mouse, Rat

Conjugation

Unconjugated

Tested Applications

IF, IH, WB

Immunogen

KLH-conjugated synthetic phosphopeptide corresponding to residues surrounding T573/570/577 of human RSK1/2/3 protein. The exact sequence is proprietary.

Target

RPS6KA1; RPS6KA2; RPS6KA3

Preservatives

Liquid in 0.42% Potassium phosphate, 0.87% Sodium chloride, pH 7.3, 30% glycerol, and 0.01% sodium azide.

Form/Appearance

Liquid in 0.42% Potassium phosphate, 0.87% Sodium chloride, pH 7.3, 30% glycerol, and 0.01% sodium azide.

Storage

Maintain refrigerated at 2-8°C for up to 2 weeks. For long term storage store at -20°C in small aliquots to prevent freeze-thaw cycles.

Note

For research use only

Clonality

Polyclonal

Source

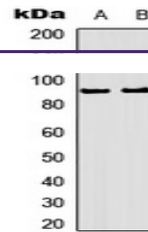
Rabbit

Uniprot ID
[P18653](#), [Q15349](#), [Q63531](#), [P18654](#), [Q9WUT3](#), [P51812](#), [Q15418](#)
Entrez
[20112](#), [20111](#), [6195](#), [110651](#), [6197](#), [6196](#), [81771](#)
Dilution Range

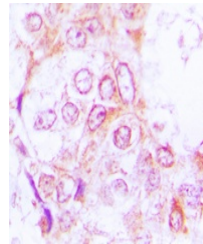
WB: 1-500:1000, IHC-P: 1-100:200, IF/ICC: 1-100:500

Expiration Date

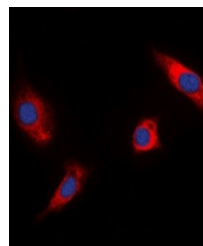
12 months from date of receipt.



Western blot analysis of RSK1/2/3 (Phosp...



Immunohistochemical analysis of RSK1/2/3...



Immunofluorescent analysis of RSK1/2/3 (...