
Product Datasheet

**c-Raf/B-RAF (Phospho-T491/599) antibody
(orb315680)**

Description

Rabbit polyclonal antibody to c-Raf/B-RAF

Species/Host

Rabbit

Reactivity

Human, Mouse, Rat

Conjugation

Unconjugated

Tested Applications

IH, WB

Immunogen

KLH-conjugated synthetic phosphopeptide corresponding to residues surrounding T491/599 of human c-Raf/B-RAF protein. The exact sequence is proprietary.

Target

RAF1; BRAF

Preservatives

Liquid in 0.42% Potassium phosphate, 0.87% Sodium chloride, pH 7.3, 30% glycerol, and 0.01% sodium azide.

Form/Appearance

Liquid in 0.42% Potassium phosphate, 0.87% Sodium chloride, pH 7.3, 30% glycerol, and 0.01% sodium azide.

Storage

Maintain refrigerated at 2-8°C for up to 2 weeks. For long term storage store at -20°C in small aliquots to prevent freeze-thaw cycles.

Note

For research use only

Clonality

Polyclonal

Source

Rabbit

Uniprot ID

[P15056](#), [Q99N57](#), [P28028](#), [P04049](#), [P11345](#)

Entrez

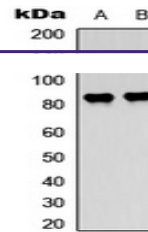
[109880](#), [24703](#), [673](#), [5894](#), [110157](#)

Dilution Range

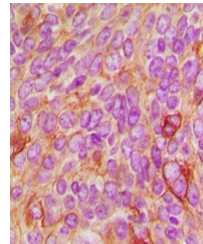
WB: 1-500:1000, IHC-P: 1-100:200

Expiration Date

12 months from date of receipt.



Western blot analysis of c-Raf/B-RAF (Ph...



Immunohistochemical analysis of c-Raf/B-...