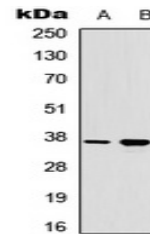


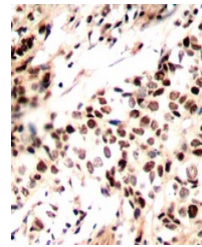
Product Datasheet

RAD51A (Phospho-Y315) antibody (orb315675)

Description	Rabbit polyclonal antibody to RAD51A (Phospho-Y315)
Species/Host	Rabbit
Reactivity	Human, Mouse
Conjugation	Unconjugated
Tested Applications	IH, WB
Immunogen	KLH-conjugated synthetic phosphopeptide corresponding to residues surrounding Y315 of human RAD51A protein. The exact sequence is proprietary.
Target	RAD51
Preservatives	Liquid in 0.42% Potassium phosphate, 0.87% Sodium chloride, pH 7.3, 30% glycerol, and 0.01% sodium azide.
Form/Appearance	Liquid in 0.42% Potassium phosphate, 0.87% Sodium chloride, pH 7.3, 30% glycerol, and 0.01% sodium azide.
Storage	Maintain refrigerated at 2-8°C for up to 2 weeks. For long term storage store at -20°C in small aliquots to prevent freeze-thaw cycles.
Note	For research use only
Clonality	Polyclonal
Source	Rabbit
Uniprot ID	Q06609 , Q08297
Entrez	5888 , 19361
Dilution Range	WB: 1-500:1000, IHC-P: 1-100:200
Expiration Date	12 months from date of receipt.



Western blot analysis of RAD51A (Phospho...)



Immunohistochemical analysis of RAD51A (...)