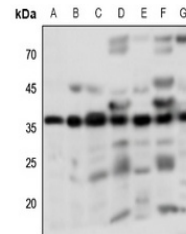


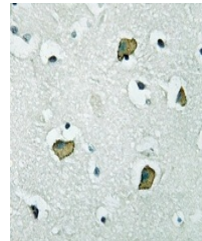
Product Datasheet

PGD2 Receptor antibody (orb315671)

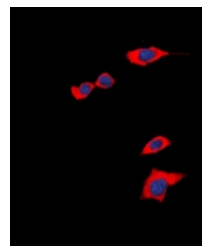
Description	Rabbit polyclonal antibody to PGD2 Receptor
Species/Host	Rabbit
Reactivity	Human, Mouse, Rat
Conjugation	Unconjugated
Tested Applications	IF, IH, WB
Immunogen	KLH-conjugated synthetic peptide encompassing a sequence within the C-term region of human PGD2 Receptor. The exact sequence is proprietary.
Target	PTGDR
Preservatives	Liquid in 0.42% Potassium phosphate, 0.87% Sodium chloride, pH 7.3, 30% glycerol, and 0.01% sodium azide.
Form/Appearance	Liquid in 0.42% Potassium phosphate, 0.87% Sodium chloride, pH 7.3, 30% glycerol, and 0.01% sodium azide.
Storage	Maintain refrigerated at 2-8°C for up to 2 weeks. For long term storage store at -20°C in small aliquots to prevent freeze-thaw cycles.
Note	For research use only
Clonality	Polyclonal
Source	Rabbit
Uniprot ID	Q13258 , P70263
Entrez	19214 , 5729
Dilution Range	WB: 1-500:1000, IF/ICC: 1-100:500
Expiration Date	12 months from date of receipt.



Western blot analysis of PGD2 Receptor e...



Immunohistochemical analysis of PGD2 Rec...



Immunofluorescent analysis of PGD2 Recep...