

Product Datasheet

PKC alpha (Phospho-Y657) antibody (orb315661)

Description Rabbit polyclonal antibody to PKC alpha (pY657)

Species/Host Rabbit

Reactivity Human, Mouse, Rat

Conjugation Unconjugated

Tested Applications WB

Immunogen KLH-conjugated synthetic phosphopeptide corresponding to residues surrounding Y658 of human PKC alpha protein. The exact sequence is proprietary.

Target PRKCA

Preservatives Liquid in 0.42% Potassium phosphate, 0.87% Sodium chloride, pH 7.3, 30% glycerol, and 0.01% sodium azide.

Form/Appearance Liquid in 0.42% Potassium phosphate, 0.87% Sodium chloride, pH 7.3, 30% glycerol, and 0.01% sodium azide.

Storage Maintain refrigerated at 2-8°C for up to 2 weeks. For long term storage store at -20°C in small aliquots to prevent freeze-thaw cycles.

Note For research use only

Clonality Polyclonal

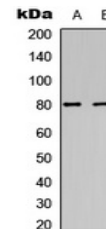
Source Rabbit

Uniprot ID [P17252](#), [P20444](#), [P05696](#)

Entrez [18750](#), [5578](#)

Dilution Range WB: 1-500:1000

Expiration Date 12 months from date of receipt.



Western blot analysis of PKC alpha (Phos...