

---

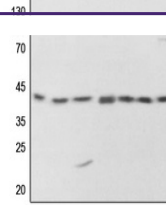
## Product Datasheet

### PKA C alpha/beta/gamma (Phospho-T198) antibody (orb315659)

**Description**

Rabbit polyclonal antibody to PKA C

kDa A B C D E F G



Western blot analysis of PKA C alpha/bet...

**Species/Host**

Rabbit

**Reactivity**

Human, Mouse, Porcine, Rat, Sheep

**Conjugation**

Unconjugated

**Tested Applications**

IF, IH, WB

**Immunogen**

KLH-conjugated synthetic phosphopeptide corresponding to residues surrounding T198 of human PKA C alpha/beta/gamma protein. The exact sequence is proprietary.

**Target**

PRKACA; PRKACB

**Preservatives**

Liquid in 0.42% Potassium phosphate, 0.87% Sodium chloride, pH 7.3, 30% glycerol, and 0.01% sodium azide.

**Form/Appearance**

Liquid in 0.42% Potassium phosphate, 0.87% Sodium chloride, pH 7.3, 30% glycerol, and 0.01% sodium azide.

**Storage**

Maintain refrigerated at 2-8°C for up to 2 weeks. For long term storage store at -20°C in small aliquots to prevent freeze-thaw cycles.

**Note**

For research use only

**Clonality**

Polyclonal

**Source**

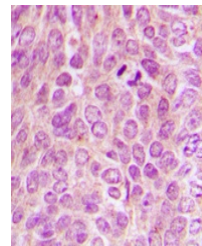
Rabbit

**Uniprot ID**
[P68181](#), [P68182](#), [P22612](#), [P05132](#), [P22694](#), [P17612](#), [P27791](#)
**Entrez**
[18747](#), [5567](#), [5566](#), [18749](#), [293508](#)
**Dilution Range**

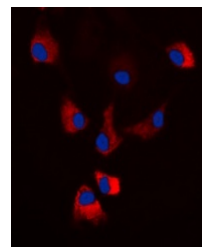
WB: 1-500:1000, IHC-P: 1-100:200, IF/ICC: 1-100:500

**Expiration Date**

12 months from date of receipt.



Immunohistochemical analysis of PKA C al...



Immunofluorescent analysis of PKA C alph...