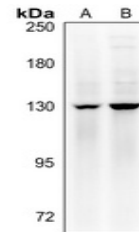


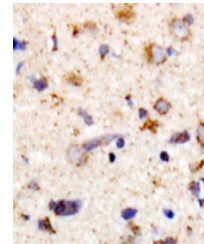
Product Datasheet

MYPT1 (Phospho-T853) antibody (orb315657)

Description	Rabbit polyclonal antibody to MYPT1 (Phospho-T853)
Species/Host	Rabbit
Reactivity	Human, Mouse, Rat, Zebrafish
Conjugation	Unconjugated
Tested Applications	IH, WB
Immunogen	KLH-conjugated synthetic phosphopeptide corresponding to residues surrounding T853 of human MYPT1 protein. The exact sequence is proprietary.
Target	PPP1R12A
Preservatives	Liquid in 0.42% Potassium phosphate, 0.87% Sodium chloride, pH 7.3, 30% glycerol, and 0.01% sodium azide.
Form/Appearance	Liquid in 0.42% Potassium phosphate, 0.87% Sodium chloride, pH 7.3, 30% glycerol, and 0.01% sodium azide.
Storage	Maintain refrigerated at 2-8°C for up to 2 weeks. For long term storage store at -20°C in small aliquots to prevent freeze-thaw cycles.
Note	For research use only
Clonality	Polyclonal
Source	Rabbit
Uniprot ID	O14974 , Q10728 , Q9DBR7
Entrez	17931 , 4659 , 116670
Dilution Range	WB: 1-500:1000, IHC-P: 1-100:200
Expiration Date	12 months from date of receipt.



Western blot analysis of MYPT1 (Phospho-...



Immunohistochemical analysis of MYPT1 (P...