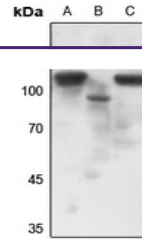

Product Datasheet

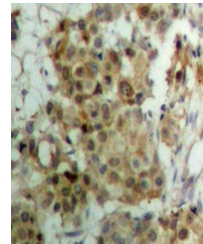
Progesterone Receptor (Phospho-S190) antibody (orb315651)

Description

Rabbit polyclonal antibody to Progesterone



Western blot analysis of Progesterone Re...



Immunohistochemical analysis of Progeste...

Species/Host

Rabbit

Reactivity

Human, Mouse, Primate, Rat

Conjugation

Unconjugated

Tested Applications

IH, WB

Immunogen

KLH-conjugated synthetic phosphopeptide corresponding to residues surrounding S190 of human Progesterone Receptor protein. The exact sequence is proprietary.

Target

PGR

Preservatives

Liquid in 0.42% Potassium phosphate, 0.87% Sodium chloride, pH 7.3, 30% glycerol, and 0.01% sodium azide.

Form/Appearance

Liquid in 0.42% Potassium phosphate, 0.87% Sodium chloride, pH 7.3, 30% glycerol, and 0.01% sodium azide.

Storage

Maintain refrigerated at 2-8°C for up to 2 weeks. For long term storage store at -20°C in small aliquots to prevent freeze-thaw cycles.

Note

For research use only

Clonality

Polyclonal

Source

Rabbit

Uniprot ID
[P06401](#)
Entrez
[5241](#)
Dilution Range

WB: 1-500:1000, IHC-P: 1-100:200, IF/ICC: 1-100:500, IP: 1-10:100

Expiration Date

12 months from date of receipt.