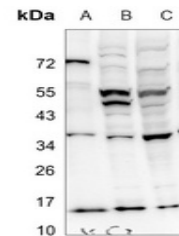


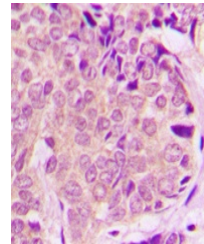
Product Datasheet

PEA15 antibody (orb315649)

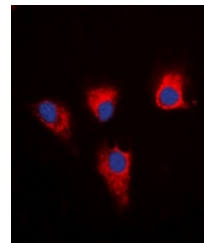
Description	Rabbit polyclonal antibody to PEA15
Species/Host	Rabbit
Reactivity	Human, Mouse, Rat
Conjugation	Unconjugated
Tested Applications	IF, IH, WB
Immunogen	KLH-conjugated synthetic peptide encompassing a sequence within the C-term region of human PEA15. The exact sequence is proprietary.
Target	PEA15
Preservatives	Liquid in 0.42% Potassium phosphate, 0.87% Sodium chloride, pH 7.3, 30% glycerol, and 0.01% sodium azide.
Form/Appearance	Liquid in 0.42% Potassium phosphate, 0.87% Sodium chloride, pH 7.3, 30% glycerol, and 0.01% sodium azide.
Storage	Maintain refrigerated at 2-8°C for up to 2 weeks. For long term storage store at -20°C in small aliquots to prevent freeze-thaw cycles.
Note	For research use only
Clonality	Polyclonal
Source	Rabbit
Uniprot ID	Q15121 , Q5U318 , Q62048
Entrez	364052 , 8682 , 18611
Dilution Range	WB: 1-500:1000, IHC-P: 1-100:200, IF/ICC: 1-100:500, IP: 1-10:100
Expiration Date	12 months from date of receipt.



Western blot analysis of PEA15 expressio...



Immunohistochemical analysis of PEA15 st...



Immunofluorescent analysis of PEA15 stai...