

Product Datasheet

**NF-kappaB p105 (Phospho-S907) antibody
(orb315635)**

Description

Rabbit polyclonal antibody to NF-kappaB

Species/Host

Rabbit

Reactivity

Human

Conjugation

Unconjugated

Tested Applications

IH, IP, WB

Immunogen

KLH-conjugated synthetic phosphopeptide corresponding to residues surrounding S907 of human NF-kappaB p105 protein. The exact sequence is proprietary.

Target

NFKB1

Preservatives

Liquid in 0.42% Potassium phosphate, 0.87% Sodium chloride, pH 7.3, 30% glycerol, and 0.01% sodium azide.

Form/Appearance

Liquid in 0.42% Potassium phosphate, 0.87% Sodium chloride, pH 7.3, 30% glycerol, and 0.01% sodium azide.

Storage

Maintain refrigerated at 2-8°C for up to 2 weeks. For long term storage store at -20°C in small aliquots to prevent freeze-thaw cycles.

Note

For research use only

Clonality

Polyclonal

Source

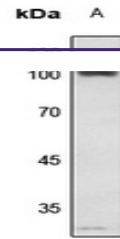
Rabbit

Uniprot ID
[P19838](#)
Entrez
[4790](#)
Dilution Range

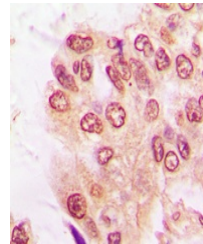
WB: 1-500:1000, IHC-P: 1-100:200, IP: 1-10:100

Expiration Date

12 months from date of receipt.



Western blot analysis of NF-kappaB p105 ...



Immunohistochemical analysis of NF-kappa...