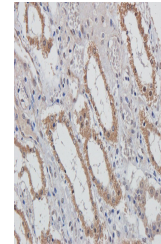


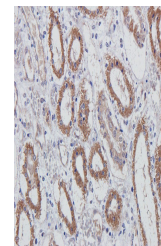
Product Datasheet

MUC1 antibody (orb315622)

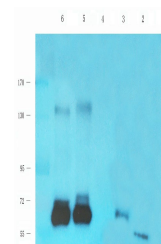
Description	MUC1 antibody
Species/Host	Rabbit
Reactivity	Human, Porcine, Rat
Conjugation	Unconjugated
Tested Applications	ICC, IF, IHC-P, WB
Immunogen	KLH conjugated synthetic peptide derived from human MUC1. Please contact us for the exact immunogen sequence. The peptide is available as orb393935.
Target	MUC1
Form/Appearance	10 mM PBS, 0.02% sodium azide
Concentration	- 100 µg (in 200 µl): 0.5 mg/ml- 200 µg (in 400 µl): 0.5 mg/ml
Storage	Store at 4°C for up to two weeks. For long term storage, aliquot and store at -20°C
Note	For research use only
Isotype	IgG
Clonality	Polyclonal
Purity	Polyclonal antibodies are purified by peptide affinity chromatography
MW	122 kDa
Uniprot ID	Q02496 , P15941
NCBI	001018016
Entrez	4582
Dilution Range	IF/ICC: 1:100-600, IHC-P: 1:100-600, WB: 1:200-1000
Expiration Date	12 months from date of receipt.



IHC-P image of pig kidney tissue using M...



IHC-P staining of pig kidney tissue usin...



Western blot analysis of mouse stomach (...)