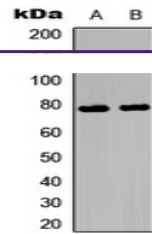

Product Datasheet

Ezrin/Radixin/Moesin (Phospho-T567/564/558) antibody (orb315620)

Description

Rabbit polyclonal antibody to



Western blot analysis of Ezrin/Radixin/M...

Species/Host

T567/564/558)

Rabbit

Reactivity

Human, Mouse, Porcine, Primate, Rat, Zebrafish

Conjugation

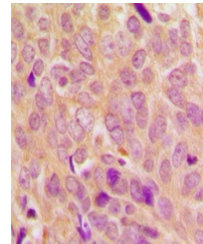
Unconjugated

Tested Applications

IF, IH, WB

Immunogen

KLH-conjugated synthetic phosphopeptide corresponding to residues surrounding T567/564/558 of human Ezrin/Radixin/Moesin protein. The exact sequence is proprietary.



Immunohistochemical analysis of Ezrin/Ra...

Target

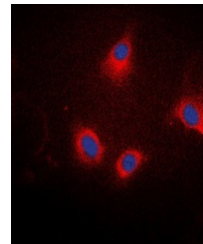
MSN; RDX; EZR

Preservatives

Liquid in 0.42% Potassium phosphate, 0.87% Sodium chloride, pH 7.3, 30% glycerol, and 0.01% sodium azide.

Form/Appearance

Liquid in 0.42% Potassium phosphate, 0.87% Sodium chloride, pH 7.3, 30% glycerol, and 0.01% sodium azide.



Immunofluorescent analysis of Ezrin/Radi...

Storage

Maintain refrigerated at 2-8°C for up to 2 weeks. For long term storage store at -20°C in small aliquots to prevent freeze-thaw cycles.

Note

For research use only

Clonality

Polyclonal

Source

Rabbit

Uniprot ID

P35241, P15311, P31977, P26038, O35763, P26041, P26043, P26040

Entrez

17698, 4478, 54319, 81521, 22350, 5962, 19684

Dilution Range

WB: 1-500:1000, IHC-P: 1-100:200, IF/ICC: 1-100:500

Expiration Date

12 months from date of receipt.