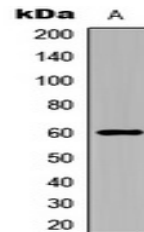


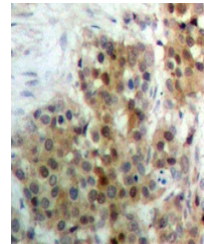
Product Datasheet

ERK7 (Phospho-T175/Y177) antibody (orb315600)

Description	Rabbit polyclonal antibody to ERK7 (Phospho-T175/Y177)
Species/Host	Rabbit
Reactivity	Human
Conjugation	Unconjugated
Tested Applications	IH, WB
Immunogen	KLH-conjugated synthetic phosphopeptide corresponding to residues surrounding T175/Y177 of human ERK7 protein. The exact sequence is proprietary.
Target	MAPK15
Preservatives	Liquid in 0.42% Potassium phosphate, 0.87% Sodium chloride, pH 7.3, 30% glycerol, and 0.01% sodium azide.
Form/Appearance	Liquid in 0.42% Potassium phosphate, 0.87% Sodium chloride, pH 7.3, 30% glycerol, and 0.01% sodium azide.
Storage	Maintain refrigerated at 2-8°C for up to 2 weeks. For long term storage store at -20°C in small aliquots to prevent freeze-thaw cycles.
Note	For research use only
Clonality	Polyclonal
Source	Rabbit
Uniprot ID	Q8TD08
Entrez	225689
Dilution Range	WB: 1-500:1000, IHC-P: 1-100:200
Expiration Date	12 months from date of receipt.



Western blot analysis of ERK7 (Phospho-T...



Immunohistochemical analysis of ERK7 (Ph...