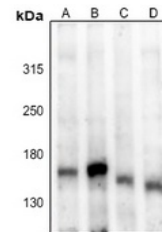


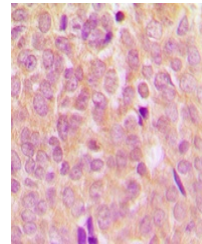
Product Datasheet

ASK1 (Phospho-S83) antibody (orb315596)

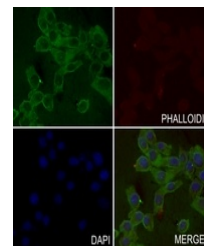
Description	Rabbit polyclonal antibody to ASK1 (Phospho-S83)
Species/Host	Rabbit
Reactivity	Human, Mouse, Rat
Conjugation	Unconjugated
Tested Applications	IF, IH, WB
Immunogen	KLH-conjugated synthetic phosphopeptide corresponding to residues surrounding S83 of human ASK1 protein. The exact sequence is proprietary.
Target	MAP3K5
Preservatives	Liquid in 0.42% Potassium phosphate, 0.87% Sodium chloride, pH 7.3, 30% glycerol, and 0.01% sodium azide.
Form/Appearance	Liquid in 0.42% Potassium phosphate, 0.87% Sodium chloride, pH 7.3, 30% glycerol, and 0.01% sodium azide.
Storage	Maintain refrigerated at 2-8°C for up to 2 weeks. For long term storage store at -20°C in small aliquots to prevent freeze-thaw cycles.
Note	For research use only
Clonality	Polyclonal
Source	Rabbit
Uniprot ID	O35099 , Q99683
Entrez	26408 , 4217
Dilution Range	WB: 1-500:1000, IHC-P: 1-100:200
Expiration Date	12 months from date of receipt.



Western blot analysis of ASK1 (Phospho-S...



Immunohistochemical analysis of ASK1 (Ph...



Immunofluorescent analysis of ASK1 (Phos...