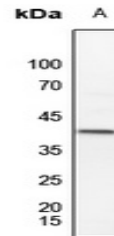


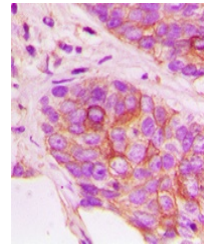
Product Datasheet

MKK3 (Phospho-T222) antibody (orb315593)

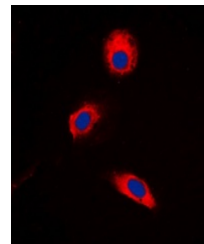
Description	Rabbit polyclonal antibody to MKK3 (Phospho-T222)
Species/Host	Rabbit
Reactivity	Human, Mouse, Zebrafish
Conjugation	Unconjugated
Tested Applications	IF, IH, WB
Immunogen	KLH-conjugated synthetic phosphopeptide corresponding to residues surrounding T222 of human MKK3 protein. The exact sequence is proprietary.
Target	MAP2K3
Preservatives	Liquid in 0.42% Potassium phosphate, 0.87% Sodium chloride, pH 7.3, 30% glycerol, and 0.01% sodium azide.
Form/Appearance	Liquid in 0.42% Potassium phosphate, 0.87% Sodium chloride, pH 7.3, 30% glycerol, and 0.01% sodium azide.
Storage	Maintain refrigerated at 2-8°C for up to 2 weeks. For long term storage store at -20°C in small aliquots to prevent freeze-thaw cycles.
Note	For research use only
Clonality	Polyclonal
Source	Rabbit
Uniprot ID	P46734, O09110
Entrez	5606, 26397
Dilution Range	WB: 1-500:1000, IHC-P: 1-100:200, IF/ICC: 1-100:500
Expiration Date	12 months from date of receipt.



Western blot analysis of MKK3 (Phospho-T222)



Immunohistochemical analysis of MKK3 (Phospho-T222)



Immunofluorescent analysis of MKK3 (Phospho-T222)