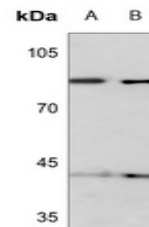


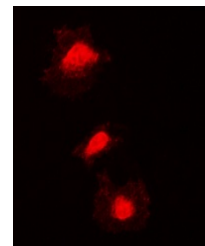
## Product Datasheet

### KIF2C (Phospho-S95) antibody (orb315584)

|                            |  |
|----------------------------|--|
| <b>Description</b>         | Rabbit polyclonal antibody to KIF2C (Phospho-S95)  |
| <b>Species/Host</b>        | Rabbit   |
| <b>Reactivity</b>          | Human, Primate   |
| <b>Conjugation</b>         | Unconjugated   |
| <b>Tested Applications</b> | IF, WB   |
| <b>Immunogen</b>           | KLH-conjugated synthetic phosphopeptide corresponding to residues surrounding S95 of human KIF2C protein. The exact sequence is proprietary. |
| <b>Target</b>              | KIF2C  |
| <b>Preservatives</b>       | Liquid in 0.42% Potassium phosphate, 0.87% Sodium chloride, pH 7.3, 30% glycerol, and 0.01% sodium azide.                                    |
| <b>Form/Appearance</b>     | Liquid in 0.42% Potassium phosphate, 0.87% Sodium chloride, pH 7.3, 30% glycerol, and 0.01% sodium azide.                                    |
| <b>Storage</b>             | Maintain refrigerated at 2-8°C for up to 2 weeks. For long term storage store at -20°C in small aliquots to prevent freeze-thaw cycles.      |
| <b>Note</b>                | For research use only  |
| <b>Clonality</b>           | Polyclonal   |
| <b>Source</b>              | Rabbit   |
| <b>Uniprot ID</b>          | <a href="#">Q99661</a>   |
| <b>Entrez</b>              | <a href="#">11004</a>  |
| <b>Dilution Range</b>      | WB: 1-500:1000, IF/ICC: 1-100:500  |
| <b>Expiration Date</b>     | 12 months from date of receipt.  |



Western blot analysis of KIF2C (Phospho-...



Immunofluorescent analysis of KIF2C (Pho...