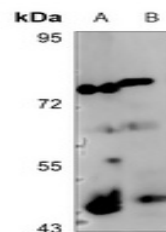


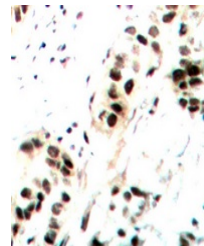
Product Datasheet

c-Jun (Phospho-S73/100) antibody (orb315576)

Description	Rabbit polyclonal antibody to c-Jun
Species/Host	Rabbit
Reactivity	Human, Mouse, Porcine, Rat, Zebrafish
Conjugation	Unconjugated
Tested Applications	IH, WB
Immunogen	KLH-conjugated synthetic phosphopeptide corresponding to residues surrounding S73/100 of human c-Jun protein. The exact sequence is proprietary.
Target	JUN; JUND
Preservatives	Liquid in 0.42% Potassium phosphate, 0.87% Sodium chloride, pH 7.3, 30% glycerol, and 0.01% sodium azide.
Form/Appearance	Liquid in 0.42% Potassium phosphate, 0.87% Sodium chloride, pH 7.3, 30% glycerol, and 0.01% sodium azide.
Storage	Maintain refrigerated at 2-8°C for up to 2 weeks. For long term storage store at -20°C in small aliquots to prevent freeze-thaw cycles.
Note	For research use only
Clonality	Polyclonal
Source	Rabbit
Uniprot ID	P15066, P05627, P17325, P05412, P17535, P52909
Entrez	16476, 24518, 16478, 3725, 3728, 24516
Dilution Range	WB: 1-500:1000, IHC-P: 1-100:200, IF/ICC: 1-100:500, IP: 1-10:100
Expiration Date	12 months from date of receipt.



Western blot analysis of c-Jun (Phospho-...



Immunohistochemical analysis of c-Jun (P...