
Product Datasheet

NRSF/REST antibody (orb315558)

Description

NRSF/REST antibody

Species/Host

Rabbit

Reactivity

Human, Mouse, Rat

Conjugation

Unconjugated

Tested

ELISA, ICC, IF, IHC-P

Applications
Immunogen

KLH conjugated synthetic peptide derived from human NRSF/REST. Please contact us for the exact immunogen sequence. The peptide is available as orb374912.

Target

NRSF/REST

Form/Appearance

10 mM PBS, 0.02% sodium azide

Concentration

- 100 µg (in 100 µl): 1 mg/ml- 200 µg (in 200 µl): 1 mg/ml

Storage

Store at 4°C for up to two weeks. For long term storage, aliquot and store at -20°C, avoid freeze/thaw cycles.

Note

For research use only

Isotype

IgG

Clonality

Polyclonal

Purity

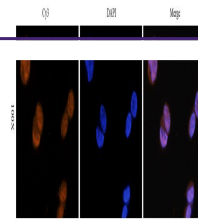
Polyclonal antibodies are purified by peptide affinity chromatography

Uniprot ID
[O54963](#), [Q155C6](#), [Q13127](#)
NCBI
[001180437](#), [11](#), [001193508](#)
Entrez
[5978](#)
Dilution Range

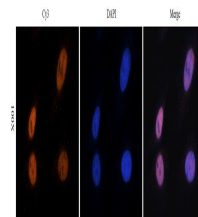
IHC-P: 1:100-500, IF/ICC: 1:100-500 (based on 0.5 mg/ml)

Expiration Date

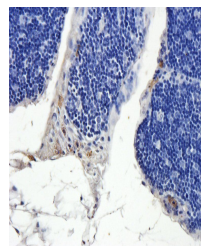
12 months from date of receipt.



IF analysis of human 293T cells tissue u...



Immunofluorescence analysis of human hel...



Immunohistochemical staining of paraffin...