
Product Datasheet

VEGFR3 antibody (orb315557)

Description

VEGFR3 antibody

Species/Host

Rabbit

Reactivity

Human, Mouse, Rat

Conjugation

Unconjugated

Tested Applications

ELISA, IHC-P, WB

Immunogen

KLH conjugated synthetic peptide derived from human VEGFR3. Please contact us for the exact immunogen sequence. The peptide is available as orb374911.

Target

VEGFR3

Form/Appearance

10 mM PBS, 0.02% sodium azide

Concentration

- 100 µg (in 100 µl): 1 mg/ml- 200 µg (in 200 µl): 1 mg/ml

Storage

Store at 4°C for up to two weeks. For long term storage, aliquot and store at -20°C, avoid freeze/thaw cycles.

Note

For research use only

Isotype

IgG

Clonality

Polyclonal

Purity

Polyclonal antibodies are purified by peptide affinity chromatography

MW

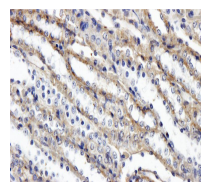
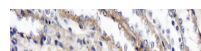
153 kDa

Uniprot ID
[P35917](#)
Entrez
[2324](#)
Dilution Range

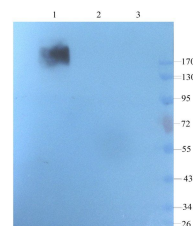
WB: 1:100-600, IHC-P: 1:100-1000 (based on 0.5 mg/ml)

Expiration Date

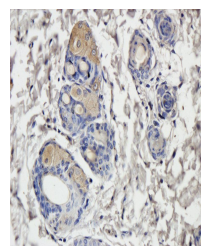
12 months from date of receipt.



Immunohistochemical staining of rat kidn...



WB analysis of mouse brain (lane 1), mou...



Immunohistochemical staining of paraffin...