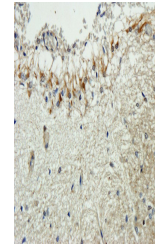


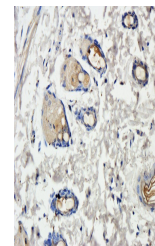
Product Datasheet

MCP3/CCL7 antibody (orb315556)

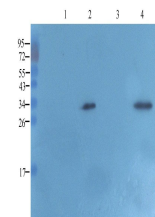
Description	MCP3/CCL7 antibody
Species/Host	Rabbit
Reactivity	Human, Mouse, Rat
Conjugation	Unconjugated
Tested Applications	ELISA, IHC-P
Immunogen	KLH conjugated synthetic peptide derived from human MCP3/CCL7. Please contact us for the exact immunogen sequence. The peptide is available as orb374910.
Target	MCP3/CCL7
Form/Appearance	10 mM PBS, 0.02% sodium azide
Concentration	- 100 µg (in 100 µl): 1 mg/ml- 200 µg (in 200 µl): 1 mg/ml
Storage	Store at 4°C for up to two weeks. For long term storage, aliquot and store at -20°C, avoid freeze/thaw cycles.
Note	For research use only
Isotype	IgG
Clonality	Polyclonal
Purity	Polyclonal antibodies are purified by peptide affinity chromatography
MW	11 kDa
Uniprot ID	P80098
Dilution Range	IHC-P: 1:100-500 (based on 0.5 mg/ml)
Expiration Date	12 months from date of receipt.



IHC-P image of rat brain tissue using an...



IHC-P staining of rat skin tissue using ...



Western blot analysis of mouse brain (la...