

---

## Product Datasheet

### TGF beta Receptor 2 antibody (orb315555)

**Description**

TGF beta Receptor 2 antibody

**Species/Host**

Rabbit

**Reactivity**

Human, Mouse, Rat

**Conjugation**

Unconjugated

**Tested Applications**

ELISA, IHC-P, WB

**Immunogen**

KLH conjugated synthetic peptide derived from human TGF beta Receptor 2. Please contact us for the exact immunogen sequence. The peptide is available as orb374909.

**Target**

TGF beta Receptor 2

**Form/Appearance**

10 mM PBS, 0.02% sodium azide

**Concentration**

- 100 µg (in 100 µl): 1 mg/ml- 200 µg (in 200 µl): 1 mg/ml

**Storage**

Store at 4°C for up to two weeks. For long term storage, aliquot and store at -20°C, avoid freeze/thaw cycles.

**Note**

For research use only

**Isotype**

IgG

**Clonality**

Polyclonal

**Purity**

Polyclonal antibodies are purified by peptide affinity chromatography

**MW**

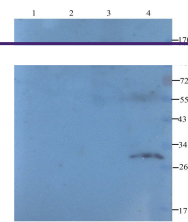
65 kDa

**Uniprot ID**
[P38438](#), [P37173](#), [Q62312](#)
**NCBI**
[21](#), [001024847](#), [001020018](#), [11](#)
**Entrez**
[7048](#)
**Dilution Range**

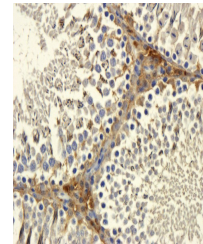
WB: 1:100-300, IHC-P: 1:100-500 (based on 0.5 mg/ml)

**Expiration Date**

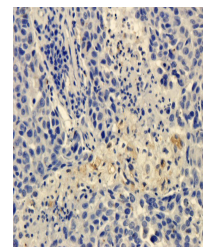
12 months from date of receipt.



Western blot analysis of mouse testis (I...



IHC-P staining of rat testis tissue usin...



Immunohistochemical staining of paraffin...