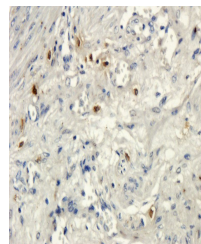


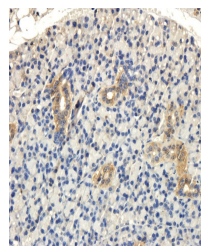
Product Datasheet

RANKL antibody (orb315551)

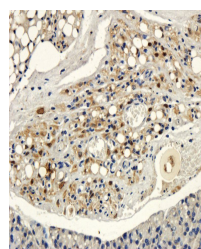
Description	RANKL antibody
Species/Host	Rabbit
Reactivity	Human, Mouse, Rat
Conjugation	Unconjugated
Tested Applications	ELISA, IHC-P
Immunogen	KLH conjugated synthetic peptide derived from human RANKL. Please contact us for the exact immunogen sequence. The peptide is available as orb374905.
Target	RANKL
Form/Appearance	10 mM PBS, 0.02% sodium azide
Concentration	- 100 µg (in 100 µl): 1 mg/ml- 200 µg (in 200 µl): 1 mg/ml
Storage	Store at 4°C for up to two weeks. For long term storage, aliquot and store at -20°C, avoid freeze/thaw cycles.
Note	For research use only
Isotype	IgG
Clonality	Polyclonal
Purity	Polyclonal antibodies are purified by peptide affinity chromatography
Uniprot ID	Q9Y6Q6 , O35305
Entrez	8792
Dilution Range	IHC-P: 1:100-500 (based on 0.5 mg/ml)
Expiration Date	12 months from date of receipt.



IHC-P staining of human endometrial cancer...



Immunohistochemical staining of paraffin...



Immunohistochemical staining of mouse lymph...