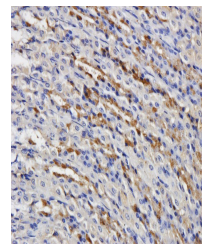


Product Datasheet

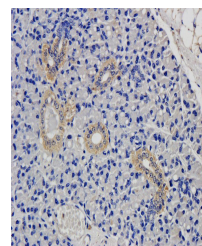
CD15 antibody (orb315549)

Description	CD15 antibody
Species/Host	Rabbit
Reactivity	Mouse, Rat
Conjugation	Unconjugated
Tested Applications	ELISA, IHC-P, WB
Immunogen	KLH conjugated synthetic peptide derived from human CD15. Please contact us for the exact immunogen sequence. The peptide is available as orb374903.
Target	CD15
Form/Appearance	10 mM PBS, 0.02% sodium azide
Concentration	- 100 µg (in 100 µl): 1 mg/ml- 200 µg (in 200 µl): 1 mg/ml
Storage	Store at 4°C for up to two weeks. For long term storage, aliquot and store at -20°C, avoid freeze/thaw cycles.
Note	For research use only
Isotype	IgG
Clonality	Polyclonal
Purity	Polyclonal antibodies are purified by peptide affinity chromatography
MW	59 kDa
Dilution Range	WB: 1:100-500, IHC-P: 1:100-500 (based on 0.5 mg/ml)
Expiration Date	12 months from date of receipt.

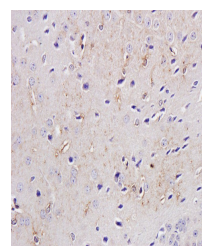


IHC-P image of rat stomach tissue using

...



Immunohistochemical staining of paraffin...



Immunohistochemical staining of mouse br...