
Product Datasheet

HEPCIDIN antibody (orb315547)

Description

HEPCIDIN antibody

Species/Host

Rabbit

Reactivity

Human, Mouse, Rat

Conjugation

Unconjugated

Tested Applications

ELISA, IHC-P, WB

Immunogen

KLH conjugated synthetic peptide derived from human HEPCIDIN. Please contact us for the exact immunogen sequence. The peptide is available as orb374901.

Target

HEPCIDIN

Form/Appearance

10 mM PBS, 0.02% sodium azide

Concentration

- 100 µg (in 100 µl): 1 mg/ml- 200 µg (in 200 µl): 1 mg/ml

Storage

Store at 4°C for up to two weeks. For long term storage, aliquot and store at -20°C, avoid freeze/thaw cycles.

Note

For research use only

Isotype

IgG

Clonality

Polyclonal

Purity

Polyclonal antibodies are purified by peptide affinity chromatography

MW

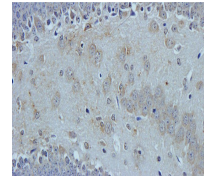
10 kDa

Uniprot ID
[P81172](#)
NCBI
[021175](#), [21](#), [066998](#), [11](#)
Entrez
[57817](#)
Dilution Range

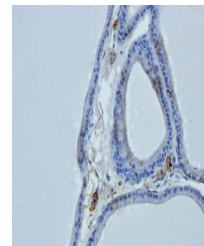
WB:1: 100-500, IHC-P: 1:100-500 (based on 0.5 mg/ml)

Expiration Date

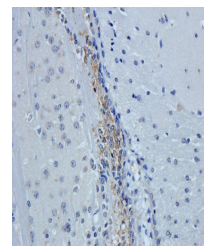
12 months from date of receipt.



IHC-P staining of mouse brain tissue using...



IHC-P image of rat prostate tissue using...



Immunohistochemical staining of mouse brain...