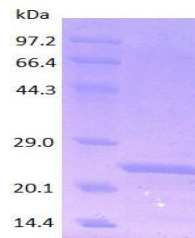


Product Datasheet

TRX protein (orb315546)

Description	TRX protein
Species/Host	E. coli
Conjugation	Unconjugated
Tested Applications	ELISA, SDS-PAGE, WB
Target	TRX
Form/Appearance	20mM Tris-HCl, 150mM NaCl, pH 7.5
Concentration	1 mg/ml
Storage	Store at 4°C for up to two weeks. For long term storage, aliquot and store at -20°C, avoid freeze/thaw cycles.
Note	For research use only
Application notes	His6-tag, S-tag
Protein Sequence	MSDKIIHLTD DSFDTDVLKA DGAILVDFWA EWCGPCKMIA PILDEIADEY QGKLTVAKLN IDQNPGTAPK YGIRGIPTLL LFKNGEVAAT KVGALSKGQL KEFLDANLAG SGSGHMHMHHH HHSSGLVPRG SGMKETAAK FERQHMDSPD LGTDDDDKAM ADIGSEFELR RQACGRTRAP PPPPLRSGC
Purity	> 90.0% as determined by 12% SDS-PAGE
Source	pET32a
MW	20.6 kDa
Expiration Date	6 months from date of receipt.



TRX
protein_orb315546_sdspage_1