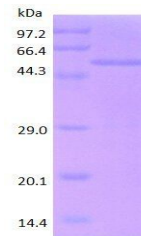


## Product Datasheet

### PEDF protein (orb315544)

<b>Description</b>	PEDF protein
<b>Species/Host</b>	E. coli
<b>Reactivity</b>	Human
<b>Conjugation</b>	Unconjugated
<b>Tested Applications</b>	ELISA, SDS-PAGE, WB
<b>Target</b>	PEDF
<b>Form/Appearance</b>	20mM Tris-HCl, 50mM NaCl, 2M Urea, 1mM DTT, pH 8.0
<b>Concentration</b>	0.5 mg/ml
<b>Storage</b>	Store at 4°C for up to two weeks. For long term storage, aliquot and store at -20°C, avoid freeze/thaw cycles.
<b>Note</b>	For research use only
<b>Application notes</b>	N-His6
<b>Protein Sequence</b>	<p>MQALVLLLCI GALLGHSSCQ NPASPPEEGS PDPDSTGALV            EEEDPFFKVP VNKLAAAVSN FGYDLYRVRS STSPTTNVLL            SPLSVATALS ALSLGAEQRT ESIIHRALYY DLISSPDIHG            TYKELLDTVT APQKNLKSAS RIVFEKKLRI KSSFVAPLEK            SYGTRPRVLT GNPRLDLQEI NNWVQAQMKG KLARSTKEIP            DEISILLLV AHFKGQWVTK FDSRKSLED FYLDEERTVR            VPMMSDPKAV LRYGLSDLS CKIAQLPLTG SMSIIFFLPL            KVTQNLTLIE ESLTSEFIHD IDRELKTQVA VLTVPKLLS            YEGEVTKSLQ EMKLQSLFDS PDFSKITGKP IKLTQVEHRA            GFEWNEDGAG TTPSPGLQPA HLTFFLDYHL NQPFIFVLRD            TDTGALLFIG KILDPRGP</p>
<b>Purity</b>	> 85.0% as determined by 12% SDS-PAGE
<b>MW</b>	47.0 kDa
<b>NCBI</b>	<b>002615</b>
<b>Expiration Date</b>	6 months from date of receipt.



SDS-PAGE analysis of PEDF protein