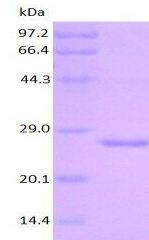


## Product Datasheet

### ORM1 protein (orb315543)

<b>Description</b>	ORM1 protein
<b>Species/Host</b>	E. coli
<b>Reactivity</b>	Human
<b>Conjugation</b>	Unconjugated
<b>Tested Applications</b>	ELISA, SDS-PAGE, WB
<b>Target</b>	ORM1
<b>Form/Appearance</b>	20mM Tris-HCl, 50mM NaCl, 2M Urea, 1mM DTT, pH 8.0
<b>Concentration</b>	0.4 mg/ml
<b>Storage</b>	Store at 4°C for up to two weeks. For long term storage, aliquot and store at -20°C, avoid freeze/thaw cycles.
<b>Note</b>	For research use only
<b>Application notes</b>	N-His6
<b>Protein Sequence</b>	<p>QIPLCANLVP VPITNATLDR ITGKWFYIAS AFRNEEYNKS  VQEIQATFFY FTPNKTEDTI FLREYQTRQD QCIYNTTYLN  VQRENGTISR YVGGQEHFAH LLILRDTKTY MLAFDVNDEK  NWGLSVYADK PETTKEQLGE FYEALDCLRI PKSDVVYTDW  KKDKCEPLEK QHEKERKQEE GES</p>
<b>Purity</b>	> 90.0% as determined by 12% SDS-PAGE
<b>MW</b>	23.9 kDa
<b>NCBI</b>	<b>000607</b>
<b>Expiration Date</b>	6 months from date of receipt.



SDS-PAGE analysis of ORM1 protein