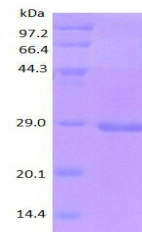


Product Datasheet

ICAM1 protein (orb315542)

Description	ICAM1 protein
Species/Host	E. coli
Reactivity	Human
Conjugation	Unconjugated
Tested Applications	ELISA, SDS-PAGE, WB
Target	ICAM1
Form/Appearance	20mM Tris-HCl, 50mM NaCl, 1M Urea, 1mM DTT, pH 7.5
Concentration	1 mg/ml
Storage	Store at 4°C for up to two weeks. For long term storage, aliquot and store at -20°C, avoid freeze/thaw cycles.
Note	For research use only
Application notes	N-His6
Protein Sequence	QTSVSPSKVI LPRGGSVLVT CSTSCDQPKL LGIETPLPKK ELLLPGNRKR VYELSNVQED SQPMCYSNCP DGQSTAKTFL TVYWTPERVE LAPLPSWQPV GKNLTLRCQV EGGAPRANLT VLLRGEKEL KREPAVGPEA EVTTTTLVRR DHHGANFSCR TELDLRPQGL ELFENTSAPY QLQTFV
Purity	> 90.0% as determined by 12% SDS-PAGE
MW	23.8 kDa
NCBI	000201
Expiration Date	6 months from date of receipt.



SDS-PAGE analysis of ICAM1 protein