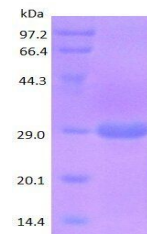


Product Datasheet

Prominin-1 protein (orb315537)

Description	Prominin-1 protein
Species/Host	E. coli
Reactivity	Human
Conjugation	Unconjugated
Tested Applications	ELISA, SDS-PAGE, WB
Target	Prominin-1
Form/Appearance	20mM Tris-HCl, 50mM NaCl, 2M Urea pH 8.0
Concentration	0.8 mg/ml
Storage	Store at 4°C for up to two weeks. For long term storage, aliquot and store at -20°C, avoid freeze/thaw cycles.
Note	For research use only
Application notes	N-His6
Protein Sequence	<p>ANHQVRTRIK RSRKLADSNF KDLRTLLNET PEQIKYILAQ YNTTKDKAFT DLNSINSVLG GGILDRLRPN IIPVLDEIKS MATAIKETKE ALENMNSTLK SLHQQSTQLS SSSLTSVKTSL RSSLNDPLCL VHPSETCNS IRLSLSQLNS NPELRQLPPV DAELDNVNNV LRTDL DGLVQ QGYQSLNDIP DRVQRQTTTV VAGIKRVLNS IGSDIDNVTQ RLPIQDILSA FSVYVNNTE YIHRNLPTLE EYDSY</p>
Purity	> 90.0% as determined by 12% SDS-PAGE
MW	30.8 kDa
NCBI	012089
Expiration Date	6 months from date of receipt.



SDS-PAGE analysis of Prominin-1 protein