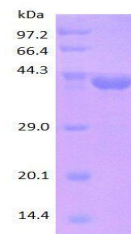


Product Datasheet

SERPINA 1 protein (orb315533)

Description	SERPINA 1 protein
Species/Host	E. coli
Reactivity	Human
Conjugation	Unconjugated
Tested Applications	ELISA, SDS-PAGE, WB
Target	SERPINA 1
Form/Appearance	20mM Tris-HCl, 50mM NaCl, 1M Urea pH 8.0
Concentration	1 mg/ml
Storage	Store at 4°C for up to two weeks. For long term storage, aliquot and store at -20°C, avoid freeze/thaw cycles.
Note	For research use only
Application notes	N-His6
Protein Sequence	EDPQGDAAQK TDTSHHDQDH PTFNKITPNL AEFASFSLYRQ LAHQSNSTNI FFSPVSIATA FAMLSTLGTGA DTHDEILEGL NPNLTIPEA QIHEGFQELL RTLNQPDSQL QLTTGNGLFL SEGLKLVDFK LEDVKKLYHS EAFTVNFVGDV EEAKKQINDY VEKGTQGKIV DLVKELDRDT VFALVNYIFF KGWERPFEV KDTEEDDFHV DQVTTVKVPM MKRLGMFNIQ HCKKLSSWVL LMKYLGNATA IFFLPDEGKL QHLENELTHD IITKFLNED RRSASLHLPK LSITGTYDLK SVLGQLGITK VFSNGADLSG VTEEAPLKLS KAVHKAULTI DEKGTEAAGA MFLEAIPMSI PP
Purity	> 90.0% as determined by 12% SDS-PAGE
MW	42.8 kDa
NCBI	000295
Expiration Date	6 months from date of receipt.



SDS-PAGE analysis of SERPINA 1 protein