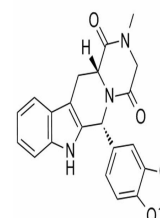


Product Datasheet

Tadalafil (orb315282)

Description	Tadalafil is a potent and selective inhibitor of Phosphodiesterase-5 (PDE5) This compound prevents t...
Note	For research use only
Formula	$C_{22}H_{19}N_3O_4$
MW	389.4
CAS Number	[171596-29-5]
SMILES	<chem>O=C1N2[C@](C(N(C)C1)=O)([H])CC3=C([C@H]2C4=CC=C5C(OCO5)=C4)NC6=C3C=CC=C6</chem>
Expiration Date	12 months from date of receipt.



Chemical structure of Tadalafil