
Product Datasheet

GSTA1/GSTA2/GSTA3/GSTA4/GSTA5 Antibody (orb315135)

Description

GSTA1/GSTA2/GSTA3/GSTA4/GSTA5 Antibody

Species/Host

Rabbit

Reactivity

Human, Mouse, Rat

Conjugation

Unconjugated

Tested Applications

IF, IHC, WB

Immunogen

A synthetic peptide corresponding to a sequence at the N-terminus of human GSTA1/A2/A3/A4/A5 (63-97aa MKLVQTRAILNYIASKYNLYGKDIKERALIDM YIE), different from the related mouse and rat sequences by five amino acids.

Form/Appearance

Lyophilized

Concentration

Adding 0.2 ml of distilled water will yield a concentration of 500 µg/ml.

Storage

Store at -20°C for one year from date of receipt. After reconstitution, at 4°C for one month. It can also be aliquotted and stored frozen at -20°C for six months. Avoid repeated freeze-thaw cycles.

Note

For research use only

Application notes

Tested Species: In-house tested species with positive results. Predicted Species: Species predicted to be fit for the product based on sequence similarities. Other applications have not been tested. Optimal dilutions should be determined by end users. . Add 0.2ml of distilled water will yield a concentration of 500µg/ml.

Isotype

Rabbit IgG

Clonality

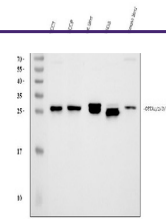
Polyclonal

MW

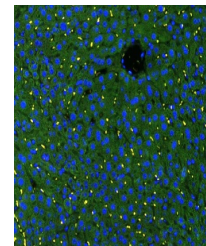
25722 MW

Uniprot ID
[P08263](#)
Expiration Date

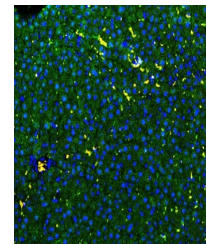
12 months from date of receipt.



WB analysis of GSTA1/A2/A3/A4/A5 using a...



IF analysis of GSTA1/A2/A3/A4/A5 using a...



IF analysis of GSTA1/A2/A3/A4/A5 using a...