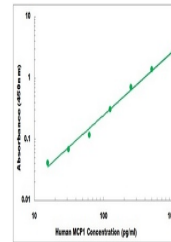


## Product Datasheet

### Human MCP1 ELISA Kit (orb315028)

<b>Description</b>	Human MCP1 ELISA Kit
<b>Reactivity</b>	Human
<b>Range</b>	15.6 pg/ml - 1000 pg/ml
<b>Tested Applications</b>	ELISA
<b>Target</b>	CCL2
<b>Storage</b>	Shipped and store at 4°C for 6 months, store at -20°C for one year. Avoid freeze/thaw cycles.
<b>Note</b>	For research use only
<b>Application notes</b>	Experiment Notes: Cell Culture Supernatants, Serum, Plasma, Tissue Homogenates
<b>Sample Types</b>	Cell Culture Supernates, Serum, Plasma, Tissue Homogenates
<b>Uniprot ID</b>	<b>P13500</b>
<b>Sensitivity</b>	7 pg/ml
<b>Entrez</b>	<b>6347</b>
<b>Expiration Date</b>	Please enquire.



Representative  
Standard  
Curve