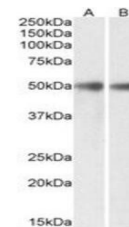


Product Datasheet

GDE1 antibody (orb313877)

Description	Goat polyclonal antibody to GDE1
Species/Host	Goat
Reactivity	Canine, Human, Mouse, Rat
Conjugation	Unconjugated
Tested Applications	ELISA, WB
Target	GDE1 / MIR16 (aa230-242)
Preservatives	Supplied at 0.5 mg/ml in Tris saline, 0.02% sodium azide, pH 7.3 with 0.5% bovine serum albumin. Aliquot and store at -20°C. Minimize freezing and thawing.
Storage	Aliquot and store at -20°C. Minimize freezing and thawing.
Note	For research use only
Application notes	WB: Approx 50kDa band observed in Mouse and Rat Brain lysates (calculated MW of 37.7kDa according to NP_057725.1). The observed molecular weight corresponds to the glycosylated form. Recommended concentration: 0.3-1µg/ml.
Protein Sequence	SLSHTGDGKPRYD
Clonality	Polyclonal
MW	37.7
Entrez	51573
Dilution Range	ELISA: 1:128000, WB: 0.3-1 µg/ml
Expiration Date	12 months from date of receipt.



Western blot analysis of Mouse and Rat B...