
Product Datasheet

Melatonin Receptor 1B antibody (orb313867)

Description

Melatonin Receptor 1B antibody



Species/Host

Rabbit

Reactivity

Human, Mouse, Rat

Conjugation

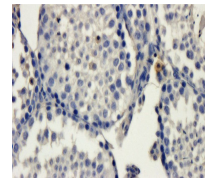
Unconjugated

Tested Applications

ELISA, IHC-P

Immunogen

KLH conjugated synthetic peptide derived from human Melatonin Receptor 1B. Please contact us for the exact immunogen sequence. The peptide is available as orb374897.



IHC-P image of mouse testis tissue using...

Target

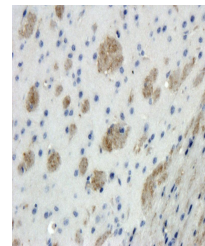
Melatonin Receptor 1B

Form/Appearance

10 mM PBS, 0.02% sodium azide

Concentration

- 100 µg (in 200 µl): 0.5 mg/ml- 200 µg (in 400 µl): 0.5 mg/ml



Immunohistochemical staining of mouse br...

Storage

Store at 4°C for up to two weeks. For long term storage, aliquot and store at -20°C, avoid freeze/thaw cycles.

Note

For research use only

Isotype

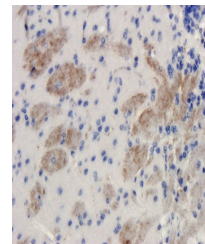
IgG

Clonality

Polyclonal

Purity

Polyclonal antibodies are purified by peptide affinity chromatography



Immunohistochemical staining of paraffin...

MW

40 kDa

Uniprot ID

[P49287](#), [P49286](#), [Q8CIQ6](#)

NCBI

[005959](#), [005950](#)

Entrez

[4544](#)

Dilution Range

IHC-P: 1:100-400

Expiration Date

12 months from date of receipt.