
Product Datasheet

CYP11A1 antibody (orb313866)

Description

CYP11A1 antibody

Species/Host

Rabbit

Reactivity

Human, Mouse, Rat

Conjugation

Unconjugated

Tested Applications

ELISA, IHC-P

Immunogen

KLH conjugated synthetic peptide derived from human CYP11A1. Please contact us for the exact immunogen sequence. The peptide is available as orb374896.

Target

CYP11A1

Form/Appearance

10 mM PBS, 0.02% sodium azide

Concentration

- 100 µg (in 200 µl): 0.5 mg/ml- 200 µg (in 400 µl): 0.5 mg/ml

Storage

Store at 4°C for up to two weeks. For long term storage, aliquot and store at -20°C, avoid freeze/thaw cycles.

Note

For research use only

Isotype

IgG

Clonality

Polyclonal

Purity

Polyclonal antibodies are purified by peptide affinity chromatography

MW

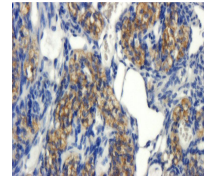
53 kDa

Uniprot ID
[P05108](#), [Q9QZ82](#), [P14137](#)
NCBI
[000772](#), [000781](#)
Entrez
[1583](#)
Dilution Range

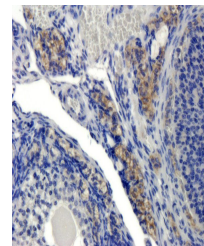
IHC-P: 1:100-800

Expiration Date

12 months from date of receipt.



IHC-P staining of mouse ovarian tissue u...



Immunohistochemical staining of mouse ov...