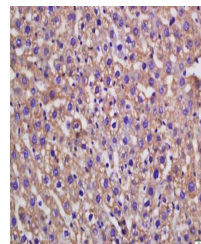


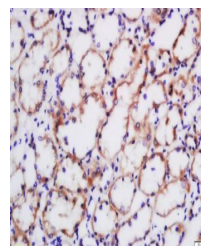
Product Datasheet

Adiponectin antibody (orb313760)

Description	Adiponectin antibody
Species/Host	Mouse
Reactivity	Human
Conjugation	Unconjugated
Tested Applications	ELISA, ICC, IF, IHC-Fr, IHC-P, WB
Immunogen	KLH conjugated synthetic peptide derived from human Adiponectin
Target	Adiponectin
Preservatives	0.01M TBS(pH7.4) with 1% rAlbumin, 0.03% Proclin300 and 50% Glycerol.
Form/Appearance	Liquid
Concentration	1mg/ml
Storage	Shipped at 4°C. Store at -20 °C for one year. Avoid repeated freeze/thaw cycles.
Note	For research use only
Isotype	IgG
Clonality	Monoclonal
MW	25 kDa
Uniprot ID	Q60994
Expiration Date	12 months from date of receipt.



Immunohistochemical staining of mouse li...



Immunohistochemical staining of human ki...