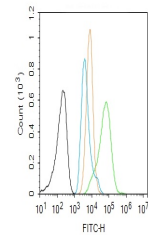


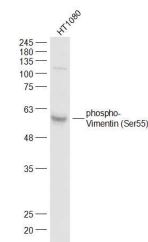
## Product Datasheet

# Vimentin (phospho-Ser55) antibody (orb313425)

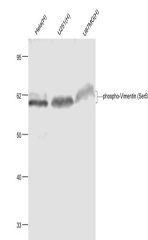
|                            |  |
|----------------------------|--|
| <b>Description</b>         | Vimentin (phospho-Ser55) antibody  |
| <b>Species/Host</b>        | Rabbit   |
| <b>Reactivity</b>          | Human  |
| <b>Conjugation</b>         | Unconjugated   |
| <b>Tested Applications</b> | FC, WB   |
| <b>Immunogen</b>           | KLH conjugated synthesised phosphopeptide derived from human Vimentin around the phosphorylation site of Ser55 (YA(p-S)SP) |
| <b>Target</b>              | phospho-Vimentin (Ser55)   |
| <b>Preservatives</b>       | 0.01M TBS(pH7.4) with 1% rAlbumin, 0.03% Proclin300 and 50% Glycerol.  |
| <b>Form/Appearance</b>     | Liquid   |
| <b>Concentration</b>       | 1mg/ml   |
| <b>Storage</b>             | Shipped at 4°C. Store at -20 °C for one year. Avoid repeated freeze/thaw cycles.   |
| <b>Note</b>                | For research use only  |
| <b>Isotype</b>             | IgG  |
| <b>Clonality</b>           | Polyclonal   |
| <b>MW</b>                  | 57 kDa   |
| <b>CAS Number</b>          | Vimentin   |
| <b>Uniprot ID</b>          | <b>P08670</b>  |
| <b>Dilution Range</b>      | WB=1:500-2000, Flow-Cyt=2ug/Test   |
| <b>Expiration Date</b>     | 12 months from date of receipt.  |



Flow cytometric analysis of A549 cells I...



Western blot analysis of human HT1080 ce...



Western blot analysis of human hela cell...