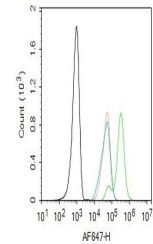


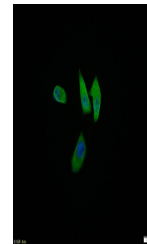
Product Datasheet

Smad3 (phospho-Thr179) antibody (orb313112)

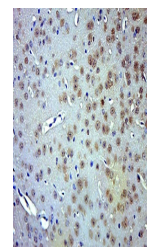
| | |
|----------------------------|---|
| Description | Smad3 (phospho-Thr179) antibody |
| Species/Host | Rabbit |
| Reactivity | Human, Mouse, Rat |
| Conjugation | Unconjugated |
| Tested Applications | FC, ICC, IHC-P |
| Immunogen | KLH conjugated synthesised phosphopeptide derived from human Smad3 around the phosphorylation site of Thr179 (PE(p-T)PP) |
| Target | phospho-Smad3 (Thr179) |
| Preservatives | 0.01M TBS(pH7.4) with 1% rAlbumin, 0.03% Proclin300 and 50% Glycerol. |
| Form/Appearance | Liquid |
| Concentration | 1mg/ml |
| Storage | Maintain refrigerated at 2-8°C for up to 2 weeks. For long term storage store at -20°C in small aliquots to prevent freeze-thaw cycles. |
| Note | For research use only |
| Isotype | IgG |
| Clonality | Polyclonal |
| MW | 48 kDa |
| Uniprot ID | P84022 |
| Dilution Range | IHC-P=1:100-500, ICC=1:100, Flow-Cyt=1ug/Test, WB=1:500-2000, IHC-F=1:100-500, IF=1:100-500, ELISA=1:5000-10000 |
| Expiration Date | 12 months from date of receipt. |



Flow cytometry of HeLa. Primary Antibody ...



ICC analysis of HeLa cell using phospho-...



IHC-P analysis of Mouse adrenal gland us...