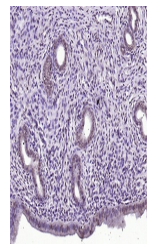


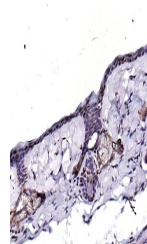
Product Datasheet

Src (phospho-Ser75) antibody (orb313108)

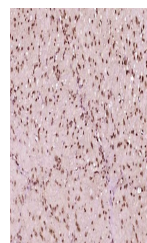
Description	Src (phospho-Ser75) antibody
Species/Host	Rabbit
Reactivity	Human, Mouse, Rat
Conjugation	Unconjugated
Tested Applications	IF, IHC-P
Immunogen	KLH conjugated synthesised phosphopeptide derived from human Src around the phosphorylation site of Ser75 (VT(p-S)PQ)
Target	phospho-Src (Ser75)
Preservatives	0.01M TBS(pH7.4) with 1% rAlbumin, 0.03% Proclin300 and 50% Glycerol.
Form/Appearance	Liquid
Concentration	1mg/ml
Storage	Maintain refrigerated at 2-8°C for up to 2 weeks. For long term storage store at -20°C in small aliquots to prevent freeze-thaw cycles.
Note	For research use only
Isotype	IgG
Clonality	Polyclonal
MW	61 kDa
Uniprot ID	P12931
Dilution Range	IHC-P=1:100-500, IF=1:200-800, IHC-F=1:100-500, ELISA=1:5000-10000
Expiration Date	12 months from date of receipt.



IHC-P analysis of rat uterus using phospho...



IHC-P analysis of mouse skin using phospho...



IHC-P analysis of Human stomach carcinom...