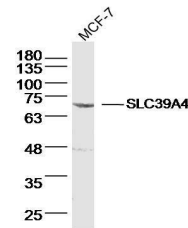


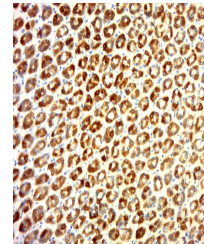
Product Datasheet

SLC39A4 antibody (orb313105)

Description	SLC39A4 antibody
Species/Host	Rabbit
Reactivity	Human, Rat
Conjugation	Unconjugated
Tested Applications	WB
Immunogen	KLH conjugated synthetic peptide derived from human SLC39A4 (281-380/647 aa)
Target	SLC39A4
Preservatives	0.01M TBS(pH7.4) with 1% rAlbumin, 0.03% Proclin300 and 50% Glycerol.
Form/Appearance	Liquid
Concentration	1mg/ml
Storage	Shipped at 4°C. Store at -20 °C for one year. Avoid repeated freeze/thaw cycles.
Note	For research use only
Isotype	IgG
Clonality	Polyclonal
MW	66 kDa
Uniprot ID	Q6P5W5
Dilution Range	WB=1:500-2000
Expiration Date	12 months from date of receipt.



WB analysis of MCF-7 cell lysate at 40 u...



Immunohistochemical staining of rat stom...