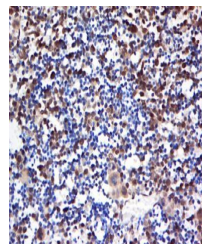


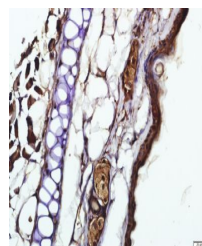
Product Datasheet

SNRPE antibody (orb313016)

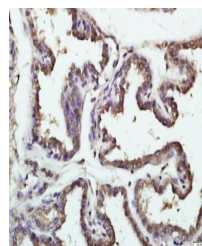
Description	SNRPE antibody
Species/Host	Rabbit
Reactivity	Mouse
Conjugation	Unconjugated
Tested Applications	IHC-P
Immunogen	KLH conjugated synthetic peptide derived from human SNRPE (51-92/92 aa)
Target	SNRPE
Preservatives	0.01M TBS(pH7.4) with 1% rAlbumin, 0.03% Proclin300 and 50% Glycerol.
Form/Appearance	Liquid
Concentration	1mg/ml
Storage	Shipped at 4°C. Store at -20 °C for one year. Avoid repeated freeze/thaw cycles.
Note	For research use only
Isotype	IgG
Clonality	Polyclonal
MW	10 kDa
Uniprot ID	P62304
Dilution Range	IHC-P=1:100-500
Expiration Date	12 months from date of receipt.



Immunohistochemical staining of mouse em...



Immunohistochemical staining of mouse sk...



Immunohistochemical staining of Mouse em...