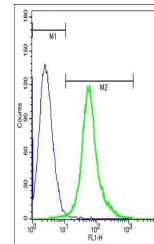


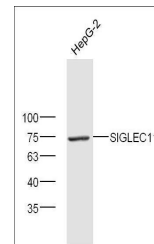
Product Datasheet

SIGLEC11 antibody (orb312975)

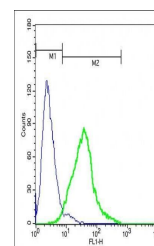
Description	SIGLEC11 antibody
Species/Host	Rabbit
Reactivity	Human
Conjugation	Unconjugated
Tested Applications	WB
Immunogen	KLH conjugated synthetic peptide derived from human SIGLEC11 (251-350/698 aa)
Target	SIGLEC11
Preservatives	0.01M TBS(pH7.4) with 1% rAlbumin, 0.03% Proclin300 and 50% Glycerol.
Form/Appearance	Liquid
Concentration	1mg/ml
Storage	Shipped at 4°C. Store at -20 °C for one year. Avoid repeated freeze/thaw cycles.
Note	For research use only
Isotype	IgG
Clonality	Polyclonal
MW	74 kDa
Uniprot ID	Q96RL6
Dilution Range	WB=1:500-2000
Expiration Date	12 months from date of receipt.



Flow cytometric analysis of Raji cell us...



Western blot analysis of extracts from H...



Flow cytometric analysis of HepG2 Cell U...